

Accessing our past

Improving discovery of historical Canadian census data and maps

Canadian Census Data Discovery Partnership (CCDDP)

Leanne Trimble, University of Toronto

CANADA.										
TABLE I.—Population, Sexes, Conjugal Condition.										
TABLEAU I.—Population, Sexes, Etat de Mariage.										
Districts.	Popu- lation.	Sexes.		Married and Widowed.			Children & Unmarried.			Sexes & Cond. omi :
		M.	F.	Mariés et Veuvege.		Enfants et non-mariés.				
		H.	F.	M.	F.	Total.	M.	F.	Total.	
Québec	44,760	22,064	20,570	7,911	7,380	15,291	14,153	13,190	27,343	2,120
Trois-Rivières	12,618	5,866	5,866	2,080	2,247	4,327	3,786	3,693	7,389	902
Montréal	55,634	26,134	24,539	10,140	9,727	19,867	15,994	14,612	30,606	5,161
Total	113,012	54,064	50,759	20,131	19,354	39,485	33,933	31,495	65,338	8,189

TABLE II.—Apportionment by Ages, &c.										
TABLEAU II.—Distribution par Ages, etc.										
Males.	Fe- males.	Males. Gérçons.	Females. Filles.	Ser- vants.	Slav's	In- firm.	Tempo- rari- ly ab- sent.	Total.		



Canadian Census Data Discovery Partnership (CCDDP)

Our Vision:

Build an open, bilingual, Census of Canada research platform

Phased approach:

1. Phase 1: scope & design census inventory (OCUL, 2017-19)
2. Phase 2: partnership development, census inventory completion, planning (SSHRC, 2021-24)
3. Phase 3: build the census discovery portal (TBD)

Phase 2: SSHRC Partnership Development Grant

Objectives:

1. Complete a comprehensive, bilingual census inventory database
2. Conduct stakeholder and user consultations
3. Investigate needs for national census discovery infrastructure
4. Develop preliminary proof-of-concept for census discovery portal

Culminating in a vision document for a future Canadian census discovery portal

Partners & researchers

Formal partnerships:

- University of Toronto Libraries
- (applicant organization)
 - Map & Data Library
 - Scholars Portal
- University of Ottawa Libraries
- University of Alberta Library
- Mount Saint Vincent University Library
- Concordia University Library
- Library & Archives Canada
- Statistics Canada

Individual investigators & contributors:

- About 30 project participants from representing both partner orgs and other institutions:
 - 9 grant investigators
 - 3 formal collaborators
 - 12 student employees
 - Other contributors on various project committees

Why?

- Supporting historical census data is challenging
- The materials aren't user-friendly
- High level of community interest

What is the census?

- Canada's largest and most comprehensive data source
- An official count of every person
- First census in what is now Canada was conducted in 1665-6 in New France
- Censuses were conducted by colonial governments until Confederation, dates and regional coverage varied
- Nowadays the census is national and is conducted every 5 years

What's in the census?

Published tables

TABLE XI. Origins of the People.

No.	Districts & S. Districts.	British—Britannic.				French.	German.	Dutch.	Scandi- navian.	Rus- sian.	Aus- trian.	Hun- garian.
		English.	Irish.	Scottish.	Others.							
1	Grey											
2	Huron, South—Sud.											
3	a. Bayfield, Village.											
4	b. Hay, Village.											
5	c. Henall, Village.											
6	d. Hullett, Village.											
7	e. McKillop, Village.											
8	f. Sealforsh, Town—Village.											
9	g. Wingham, Town—Village.											
10	h. Wroxeter, Village.											
11	74. Huron, South—Sud.											
12	75. Huron, West—Ouest.											
13	a. Ashfield, Village.											
14	b. Clinton, Town—Village.											
15	c. Colborne, Village.											
16	d. Goderich, Town—Village.											
17	e. Goderich, Town—Village.											
18	f. Wawanosh, East—Est.											
19	g. Wawanosh, West—Ouest.											
20	76. Kent.											
21	a. Blechnim, Town—Village.											
22	b. Chatham, City—Cité.											
23	c. Dover, Village.											
24	d. Harwich, Village.											
25	e. Raleigh, Village.											
26	f. Romney, Village.											
27	g. Tilbury (part), Village.											
28	h. Tilbury, East—Est.											
29	77. Kingston, City—Cité.											
30	a. Cataragui, Ward—Quartier.											
31	b. Frontenac, City—Cité.											
32	c. Ontario, City—Cité.											
33	d. Rideau, City—Cité.											
34	e. St. Lawrence, City—Cité.											
35	f. Sydenham, City—Cité.											
36	g. Victoria, City—Cité.											
37	78. Lambton, East—Est.											
38	a. Alvinston, Village.											
39	b. Arkona, Village.											
40	c. Bonquet, Village.											
41	d. Brockle, Village.											
42	e. Kinsakillen, Village.											
43	f. Oil Springs, Village.											
44	g. Petrolia, Town—Village.											
45	h. Theodford, Village.											
46	i. Warwick, Village.											
47	j. Watford, Village.											
48	79. Lambton, West—Ouest.											
49	a. Forest, Town—Village.											

Canadiana
by CRKN | par RCDR

Search within this document:

Journal and votes of the House of A
[Journal and proceedings of the Ho
[Halifax, N.S.: R. Nugent, 1852; 625 pages, 622 with full-text search]

View About

p. A94-417

STATISTICS OF EACH
Exhibiting a view of the population, pursued

Exhibiting the aggregate

No. of County.	Counties.	No. of persons under 10 years of age.	
		Males.	Females.
1	Halifax, - - -	5488	6291
2	Lunenburg, - - -	2576	2618
3	Queens, - - -	1107	1081
4	Shelburne, - - -	1490	1412
5	Yarmouth, - - -	2227	2088
6	Digby, - - -	2099	1912
7	Annapolis, - - -	2214	2138
8	Kings, - - -	2245	2122

Statistics Canada
www.statcan.gc.ca

Home Contact Us Help Search canada.gc.ca

Home > Census > 2006 Aboriginal Population Profile > Search results for "Long Plain" >

[View the most recent version.](#)

Archived Content

Information identified as archived is provided for reference, research or to the Government of Canada Web Standards and has not been altered or contact us to request a format other than those available.

2006 Aboriginal Population Profile

Data table Download Map Hierarchy Related data

All data

Long Plain
Manitoba
(Indian band area)

Select another region

Population and dwelling counts

	Total	Male
Population in 2006 ¹	752	
Population in 2001 ¹	742	
2001 to 2006 population change (%)	1.3	
Total private dwellings ²	253	
Private dwellings occupied by usual residents ³	252	
Population density per square kilometre	18.6	
Land area (square km)	40.43	

Aboriginal identity population in 2006

	Total	Male
Total population ⁴	755	380
Total Aboriginal identity population ⁵	745	370
North American Indian - single response ⁶	735	370
Métis - single response	0	0
Inuit - single response	0	0
Multiple Aboriginal identity responses	0	0
Aboriginal responses not included elsewhere ⁷	0	0
Non-Aboriginal identity population	0	10

Registered Indian status

	Total	Male
Total population ⁸	755	375
Registered Indian ⁹	740	370
Not a registered Indian	10	0

Age characteristics of the Aboriginal identity population

	Long Plain (Indian band area)			Manitoba		
	Total	Male	Female	Total	Male	Female
Total Aboriginal identity population ¹⁰	745	375	370	175,395	85,720	89,675
0 to 4 years	80	35	45	18,815	9,585	9,225
5 to 9 years	75	45	30	19,180	10,100	9,080

Beyond 20/20 Professional Browser - Population by Five-year Age Groups (18) and Sex (3), Sh... (Read-only)

File Edit View Dimension Item Window Help

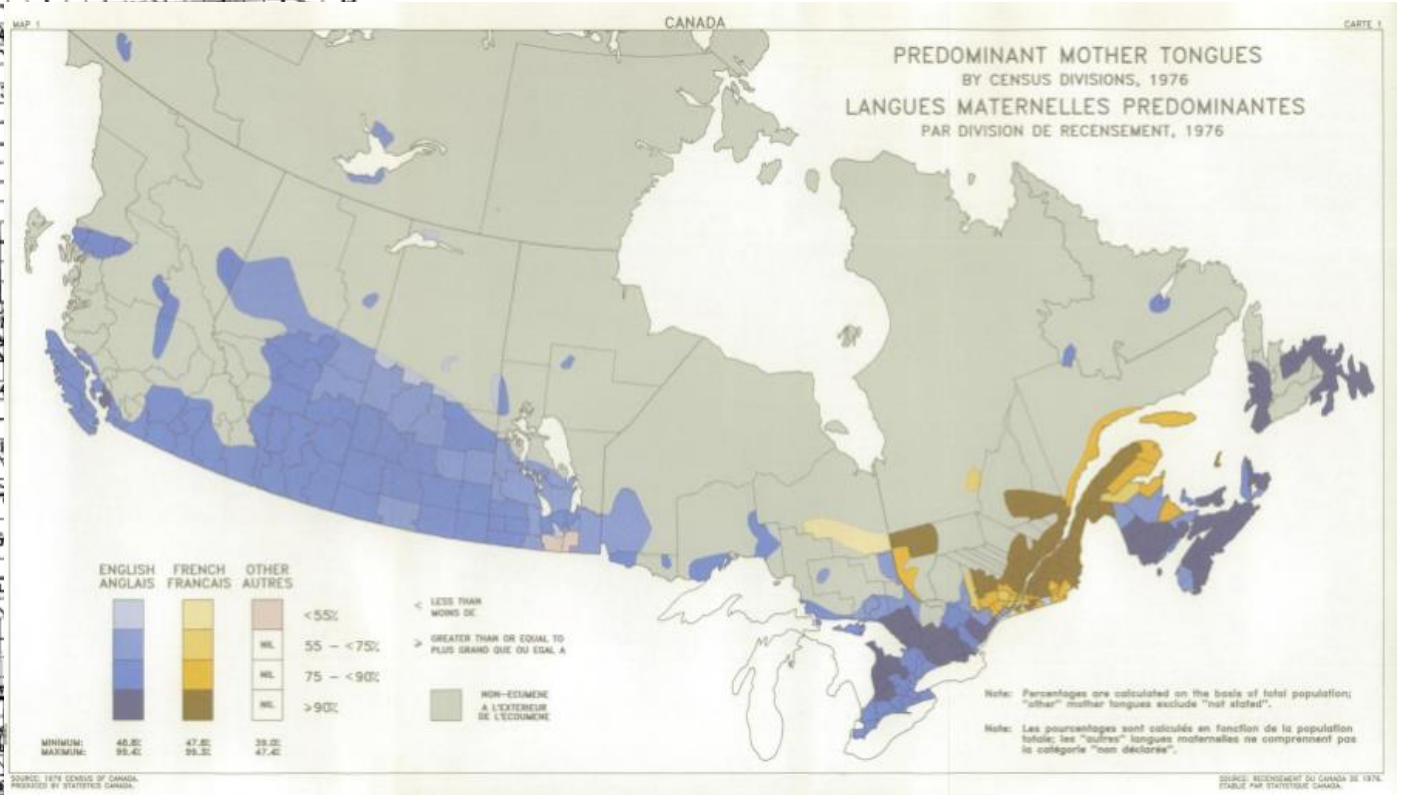
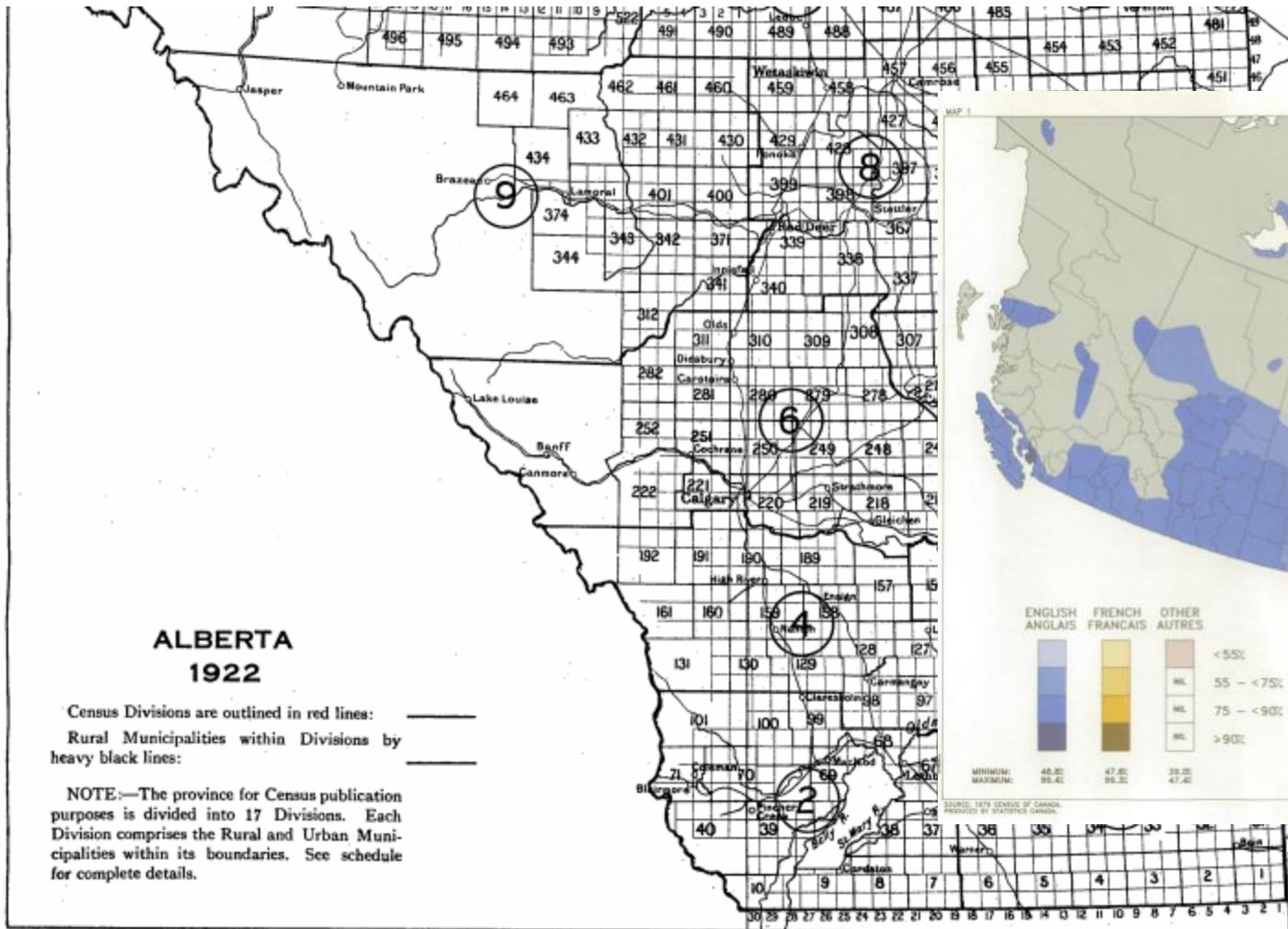
Age Groups (18)

Population by Five-year Age Groups (18) and Sex (3), Sh... (Read-only)

Geography	Canada (00)	20000	Sex (3)	Total - Sex	Marital Status	Total - Marital Status	Never married (single)	Married (including co...)	Separated	Divorced	Widowed
Age Groups (18)											
Total - Age Groups						28,846,760	12,096,855	13,567,475	588,710	1,171,340	1,422,380
Under 15 years						5,901,275	5,901,275	0	0	0	0
15-19						1,959,120	1,914,405	42,040	1,235	1,165	275
20-24						1,898,050	1,476,000	403,410	11,955	5,970	715
25-29						2,030,675	884,680	1,067,435	42,065	34,350	2,135
30-34						2,468,235	596,355	1,695,075	78,030	93,855	4,915
35-39						2,544,030	403,465	1,881,505	94,675	154,065	10,325
40-44						2,317,675	261,045	1,756,425	90,800	191,460	17,945
45-49						2,093,855	173,125	1,612,630	79,010	198,635	30,455
50-54						1,616,545	107,020	1,254,135	54,935	155,775	44,680
55-59						1,301,705	76,770	1,006,045	38,475	111,390	69,035
60-64						1,187,745	68,800	887,825	31,070	86,290	113,760
65-69						1,105,940	67,015	769,660	26,045	64,205	179,025
70-74						955,990	58,595	592,125	19,325	40,710	245,240
75-79						678,250	44,035	350,335	11,460	20,235	252,190
80-84						450,585	34,345	175,235	6,330	9,120	225,550
85-89						227,835	19,460	58,925	2,545	3,145	143,755
90 years and over						109,240	10,470	14,660	750	985	82,370

What's in the census?

Maps



What's in the census?

Geospatial data

français

Statistics Canada / Statistique Canada

Search website

Subjects | Data | Analysis | Reference | Geography | Census | Surveys and statistical programs | About StatCan | Canada.ca

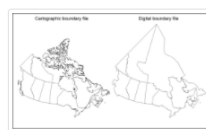
Home > Census Program > Geography > Boundary files

Boundary files

There are two types of boundary files: cartographic and digital. Cartographic boundary files portray the geographic areas using only the major land mass of Canada and its coastal islands. Digital boundary files portray the full extent of the geographic areas, including the coastal water area. The boundary files use the Lambert conformal conic projection. Boundary files using geographic projection (latitude and longitude coordinates) are available upon request.

Figure

Example of a cartographic boundary file and a digital boundary file (provinces and territories)



Boundary files options

Please select a year below:

Census year	Intercensal year
2016	2019
2011 Archived	2018
2006 Archived	2017
2001 Archived	2015

Scholars GeoPortal

Search | Map (1) | Download | Login

Search: 1911 census [Anywhere] Search

Downloadable content only

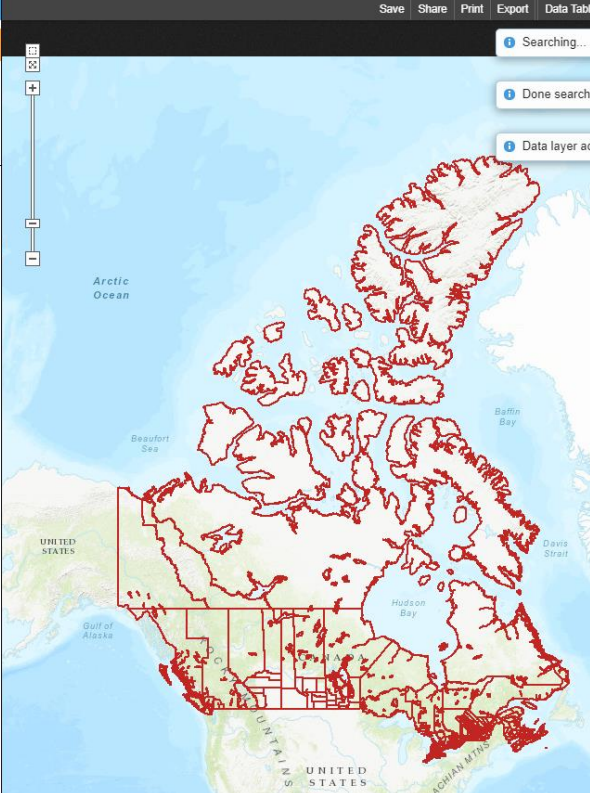
Back To Results

Downloads

Boundary Files, 1911 Census of Canada
Producer: Canadian Century Research Infrastructure
Date published: 2011-02-18 (creation), 2013-05-01 (publication)
Type of data layer: Vector

Census Divisions
Tiled map service - Vector [Remove] [Zoom] [Details]

Census Subdivisions
Tiled map service - Vector [Add] [Details]



What's in the census?

Microdata

	RECID	WGHT_P ER	WGHT_H SD	AGEGR5	AGEGR1 0	SEX	MARSTA T	AGEPRG RDIF	SEXPR	PRTYPE C	AGECHR YGRC	AGEHSD Y	CHRFLA G	CHRINHS DC	CHRTIME 6	CHH0014 C	PARHSE C
1	1	535.1704	267.5852	14	7	2	1	12	1	1	97	76	2	0	0	0	
2	2	420.6068	420.6068	15	7	1	1	97	0	0	97	88	2	0	0	0	
3	3	200.7676	200.7676	8	4	1	1	6	2	1	3	11	1	2	6	1	
4	4	399.7322	199.8661	9	4	2	1	13	1	1	97	53	2	0	0	0	
5	5	574.3806	287.1903	10	5	1	1	7	2	1	7	23	1	1	1	0	
6	6	129.4005	129.4005	13	6	1	5	97	0	0	97	73	2	0	0	0	
7	7	1011.0628	505.5314	10	5	1	1	7	2	1	97	58	2	0	0	0	
8	8	55.2428	55.2428	10	5	2	5	97	0	0	97	59	2	0	0	0	
9	9	313.4140	313.4140	13	6	2	3	97	0	0	97	72	2	0	0	0	
10	10	301.8966	150.9483	14	7	1	1	6	2	1	97	76	2	0	0	0	
11	11	238.9468	238.9468	15	7	2	3	97	0	0	97	88	2	0	0	0	
12	12	402.8749	201.4375	9	4	2	1	11	1	1	97	53	2	0	0	0	
13	13	341.7810	341.7810	11	5	2	3	97	0	0	97	61	2	0	0	0	
14	14	618.1944	309.0972	10	5	2	2	14	1	2	6	19	1	1	1	0	
15	15	606.8531	303.4266	11	5	1	1	2	2	1	97	57	2	0	0	0	
16	16	849.1632	849.1632	8	4	1	1	5	2	1	1	1	1	3	5	3	
17	17	252.0385	126.0192	12	6	2	1	10	1	1	97	66	2	0	0	0	
18	18	867.9461	433.9730	11	5	2	1	13	1	1	97	62	2	0	0	0	
19	19	598.2348	299.1174	9	4	2	1	12	1	1	97	53	2	0	0	0	
20	20	726.7825	363.3912	8	4	1	1	8	2	1	5	17	1	2	4	0	
21	21	700.8518	350.4259	14	7	1	1	10	2	1	97	77	2	0	0	0	
22	22	272.2841	136.1420	8	4	1	1	9	2	1	97	49	2	0	0	0	

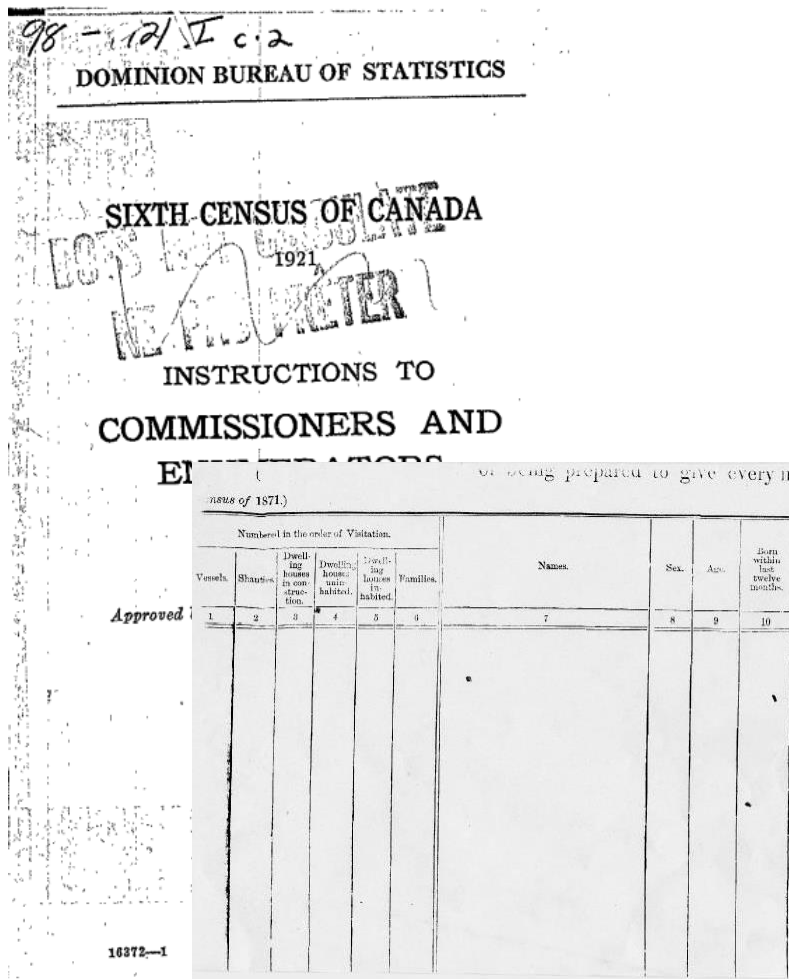
Researcher generated
microdata ← 1921

No readily available
microdata

1971 → Statistics Canada
generated microdata

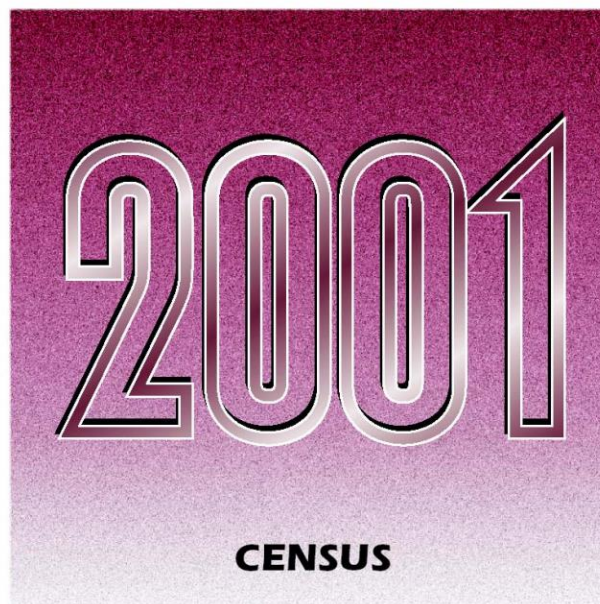
What's in the census?

Documentation



2001 Census Public Use Microdata File

Families File
User Documentation



Dictionary, Census of Population, 2016

Complete A to Z index

Release date: November 16, 2016

Updated on: November 15, 2017

Filter by: All definitions

A B C D E F G H I J K L M N O P Q

A

- [Aboriginal ancestry.](#)
- [Aboriginal group](#)
- [Aboriginal identity.](#)
- [Activities of daily living](#)
- [Adjusted after-tax income](#)
- [Adjusted counts](#)
- [Adjusted market income](#)
- [Adjusted total income](#)
- [Admission category.](#)
- [After-tax income](#)
- [Age](#)
- [Age at immigration](#)

How do we access the census?

Government websites/portals

Government of Canada Publications
Search our catalogue of over 509,100 publications. Access more than 388,300 digital publications.

Search publications

Search for

Find variations of search terms

At least one search term

Text (title, subtitle, series title, department/agency)

Everything All Fields

Control number (for example: catalogue number, International Standard Book Number [ISBN])

View electronic publications only

Search

[Advanced search](#) [Get help with your search](#)

98-400- May 3

Library and Archives Canada

Discover the Collection Search the Collection Services for the Public

Home → Censuses

Censuses

Censuses
1825 Census, Lower Canada
1831 Census, Lower Canada
1842 Census, Canada East
1842 Census, Canada West
1851 Census
1861 Census
1870 Census, Manitoba
1871 Census, Canada
1871 Census, Canada: Ontario, heads of household

Censuses

Census returns are official Government of Canada records and an invaluable source of information for genealogists and researchers. They provide information on every resident, their country or province of birth, their age, sex, occupation, and more.

Library and Archives Canada holds an extensive collection of census records from Newfoundland from 1871 to 1945. Our holdings include:

- [About the census](#)
- [Databases \(1825 to 1926\)](#)
- [Finding Aid 300: Other census and related records](#)
- [Digitized microfilm \(1871\)](#)
- [First Nations: Census records in RG10](#)
- [Newfoundland and Labrador: Census records](#)
- [Research tips](#)
- [Abbreviations for places of birth in Canada](#)
- [Census databases and indexes on microfiche](#)
- [Other resources](#)
- [Census after 1926](#)

Census Datasets

Home > [Census Program](#) > Census Datasets

← Hide Filters

Filter Datasets

Change survey

- 2016 Census - Part A (short-form questionnaire)
- 2016 Census - Part A (short-form questionnaire)**
- 2016 Census - Part B (long-form questionnaire)
- 2011 NHS
- 2011 Census
- 2006 Census
- 2001 Census
- 1996 Census
- 1991 Census
- 1986 Census
- 1981 Census

Income

Language

Type of dwelling

Geography

Community-built platforms

How do we access the census?



Canadian Centre for Health Assessment and Safety
Faculty of Arts & Sciences
Advancing Knowledge through Technology

Welcome to the
Starting

1. Census

o by

UNIVERSITY LIBRARIES
Research

Collections

- Geospatial data
- Numeric data
- Maps and atlases
- Air photos
- Toronto data

Census of Canada

- Census home
- 2016 Census
- 2011 Census
- 2011 NHS
- 2006 Census
- 2001 Census
- 1996 Census
- 1991 Census
- 1986 Census
- 1981 Census
- 1976 Census
- 1971 Census
- 1966 Census
- 1961 Census

Scholars Portal Books

Search: census 1966 Anywhere

Year Limit: From

Sort By: Relevance

Availability: Books you can access Everything, including unavailable

Collection: Internet Archive

Include: Historical text

Submit

<odesi> Français

Find data: census Title

Date: Earliest Present

Collections:

- All of <odesi>
- Statistics Canada (Microdata)
- Statistics Canada (Aggregate data)
- Public Opinion Polls
- Other Data

Additional Collections:

- Statistics Canada (Master File)
- Canadian Opinion Research Archive (CORA)
- Inter-university Consortium for Political and Social Research (ICPSR)
- Canadian Dataverses

Search

Results Showing 1 to 10 of about 1035

Sort By: Relevance Date

Need help?

Limit your search:

Keyword

- industries 801
- pumfile 731
- emploi 626
- revenu 618
- chômage 612

+ More

Series

- Enquête sur la population active 583
- Labour Force Survey 168
- Census of Population 69

Results page 1 of 9

Showing 1 to 20 of 177 results in 0.206 s

No Cover Image

Number and commercial subdivisions fermes de re commerciale Recensemer Canada. Domini federal de la sta Statistics Canada

Number and area of subdivisions, 1966 : commerciales, com

2001 Census of Population [Canada] Public Use Microdata File (PUMF): Families File

The 2001 Census Public Use Microdata File (PUMF) on Families contains data based on a 2.7% sample of the population enumerated in the census. It provides information on the demographic, social and economic characteristics of the census families and ... show more

Explore & Download

1996 Census of Population [Canada] Public Use Microdata Files (PUMF): Families File

The 1996 Census public use microdata file (PUMF) on families contains data based on a 2.8% sample of the population enumerated in the census. It provides information on the demographic, social and economic characteristics of the Canadian ... show more

Explore & Download

1966 Census Trade : Metr Recensemer

2016 Census of Population [Canada] Public Use Microdata File (PUMF): Individuals File

The 2016 Census public use microdata file (PUMF) on individuals contains 930.421 records, representing

Census

Browse through the side menu to explore census data for each census year.

Community-built platforms

How do we access the census?

The image displays three overlapping web pages. The top-left page is the 'Canadian Century Research Infrastructure' website, featuring a navigation menu with 'Français', 'Home', 'CCRI Overview', 'The Database', and 'Resources'. It highlights 'Census of Canada, Contextual Data' and lists '1911, 1921 Census' and 'Contextual Data'. The bottom-left page is the 'PRDH' (Programme de recherche) website, with a login form and a 'Welcome' message. The right page is the 'Canadian Communities Policy Observatory' website, which includes a search bar, a navigation menu with 'HOME', 'NEST', 'PEOPLE', and 'RESOURCES', and a map of Canada with a text overlay: 'Although there is a wealth of information available on Canadian communities and the individuals who live in them, it is often not accessible to those who would most benefit from it: local and regional governments, public institutions, non-profit and private organizations, planning bodies, journalists, and other stakeholders. The Canadian Communities Policy Observatory will fill this gap.' A 'Learn more' link is also present.

How do we WANT to access the census?

- Create a single access point where people can identify all of these different resources for all census years
- Provide nuanced search tools – by geography, time period, subject, and material type
- Provide search results at the item level – e.g. identify individual tables rather than just the publication the table is found within

The inventory

Historical Census of Canada Working Group

Inventory Design- Final Version:
 Approved on June 12th 2018.
 Revised November 12, 2019

Nota bene: 3 main collections with approximately 3 subdivisions for each. 9 specific tables with different or similar types of metadata depending on the collection.

(1) Inventory Design by Collections
 Table that lists and describes each of the main content collections. Used to create a standardized pick list available in each of the main content tables. (Probably contains census years?)

(2) Censuses
 Authority table that lists and describes each census included in the inventory. Used to generate a standardized pick list available in each of the main content tables.

(3) Geographies
 Authority table that lists and describes each census geography. Used to generate a standardized pick list available in each of the main content tables.

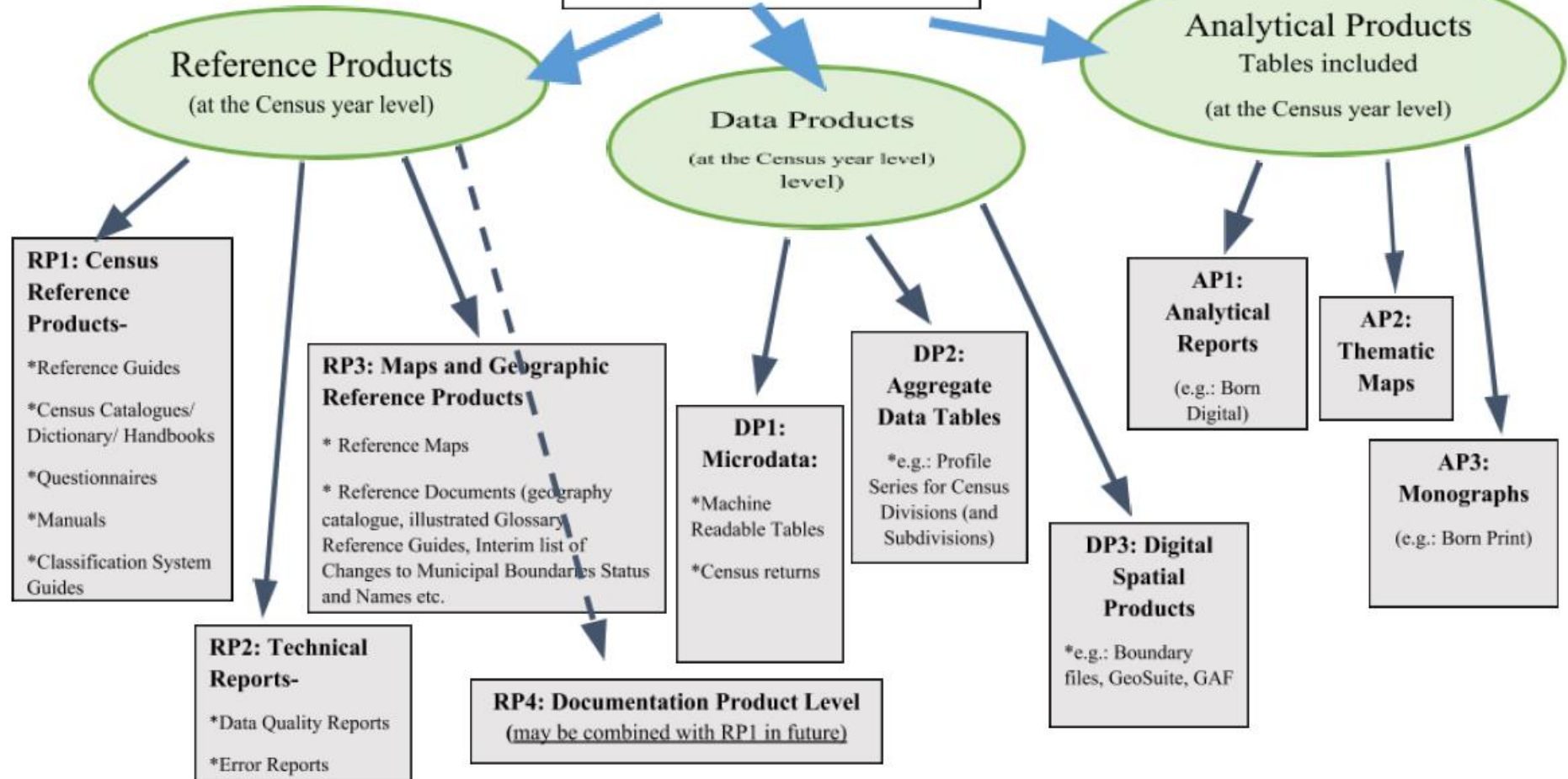
(4) Authority table: Census publication volumes for born print

(5) Subjects *NEW*
 Authority table of standard subjects with see references for consistent terminology over time

(6) Material types *NEW*
 Authority list of material types shown in the ten gray boxes below

Supporting Tables

Source: picklists for joins with tables below



The database (Airtable software)

119/140 censuses
inventoried to date

The screenshot displays the Airtable interface for a database titled "ENGLISH - Census Inventory". The interface includes a top navigation bar with tabs for "Data", "Automations", and "Interfaces". Below this is a filter bar with various categories like "Census items", "Subjects", "Census years", etc. The main area shows a table with columns for "Title", "Content type", "S.", "Cen...", "Census Y...", "ID", "Parallel Title", "Author/Producer of item", and "Subject". The table lists 22 census items, each with a title, content type (mostly "Aggregate data tables"), a selection checkbox, and various identifiers and titles in both English and French. The "Subject" column lists categories like "Demographic change", "Population", "Lands", "Sex", and "Place of birth".

	Title	Content type	S.	Cen...	Census Y...	ID	Parallel Title	Author/Producer of item	Subject
1	Table 1: Population of Canada, its provinces and territories, 1871...	Aggregate data tables	<input checked="" type="checkbox"/>	1921	1921 1911 189	DP20000001	Tableau 1: Population du Canada par provinces et territoires, 1871...	Canada. Dominion Bureau of Statistics	Demographic change Population
2	Table 2: Per cent distribution of the population by provinces, 18...	Aggregate data tables	<input checked="" type="checkbox"/>	1921	1921 1911 189	DP20000002	Tableau 2: Répartition pour cent de la population par provinces, 18...	Canada. Dominion Bureau of Statistics	Demographic change Population
3	Table 3: Numerical increase in population of Canada by province...	Aggregate data tables	<input checked="" type="checkbox"/>	1921	1921 1911 189	DP20000003	Tableau 3: Augmentation numérique de la population du Canada p...	Canada. Dominion Bureau of Statistics	Population Demographic change
4	Table 4: Increase per cent of population by provinces, 1871-1921.	Aggregate data tables	<input checked="" type="checkbox"/>	1921	1921 1911 189	DP20000004	Tableau 4: Pourcentage d'accroissement de la population du Cana...	Canada. Dominion Bureau of Statistics	Population Demographic change
5	Table 5: Population at each Census period and its increase over ...	Aggregate data tables	<input checked="" type="checkbox"/>	1921	1921 1911 189	DP20000005	Tableau 5: Population à chaque période décennale et son augment...	Canada. Dominion Bureau of Statistics	Population Demographic change
<input type="checkbox"/>	Table 6: Area and density of population of Canada by provinces i...	Aggregate data tables	<input type="checkbox"/>	1921	1901 1921 191	DP20000006	Tableau 6: Superficie et densité des populations du Canada par pro...	Canada. Dominion Bureau of Statistics	Demographic change Lands Populati
7	Table 7: Area and density of population of Canada by electoral d...	Aggregate data tables	<input checked="" type="checkbox"/>	1921	1901 1921 191	DP20000007	Tableau 7: Superficie et densité des populations du Canada par circ...	Canada. Dominion Bureau of Statistics	Demographic change Lands Populati
8	Table 8: Population by districts and subdistricts according to the ...	Aggregate data tables	<input checked="" type="checkbox"/>	1921	1901 1921 191	DP20000008	Tableau 8: Population par districts et sous-districts constitués par la...	Canada. Dominion Bureau of Statistics	Demographic change Population
9	Table 9: Population contained within incorporated urban centres...	Aggregate data tables	<input checked="" type="checkbox"/>	1921	1901 1921 191	DP20000009	Tableau 9: Population comprise dans les centres urbains et la prop...	Canada. Dominion Bureau of Statistics	Demographic change Population
10	Table 10: Area and density of population of cities and towns, 19...	Aggregate data tables	<input checked="" type="checkbox"/>	1921	1901 1921 191	DP20000010	Tableau 10: Superficie et densité de la population des cités et des v...	Canada. Dominion Bureau of Statistics	Lands Demographic change Populati
11	Table 11: Population of incorporated villages, 1921, 1911 and 19...	Aggregate data tables	<input checked="" type="checkbox"/>	1921	1901 1921 191	DP20000011	Tableau 11: Population des villages incorporés 1921, 1911 et 1901 ...	Canada. Dominion Bureau of Statistics	Demographic change Population
12	Table 12: Population of cities, towns and villages of 1,000 popul...	Aggregate data tables	<input checked="" type="checkbox"/>	1921	1921 1911 189	DP20000012	Tableau 12: Population des cités, des villes et des villages de 1 000 ...	Canada. Dominion Bureau of Statistics	Demographic change Population
13	Table 13: Cities and towns of Canada having a population of 5,0...	Aggregate data tables	<input checked="" type="checkbox"/>	1921	1921 1911 189	DP20000013	Tableau 13: Cités et Villes du Canada ayant une population de 5,00...	Canada. Dominion Bureau of Statistics	Demographic change Population
14	Table 14: Population, Canadian, British and Foreign born, classifi...	Aggregate data tables	<input checked="" type="checkbox"/>	1921	1921	DP20000014	Tableau 14: Population classifiée comme étant de naissance canadi...	Canada. Dominion Bureau of Statistics	Sex Place of birth
15	Table 15: Population, Canadian, British and Foreign born, classifi...	Aggregate data tables	<input checked="" type="checkbox"/>	1921	1921	DP20000015	Tableau 15: Population classifiée comme étant de naissance canadi...	Canada. Dominion Bureau of Statistics	Sex Place of birth
16	Table 16: Population, Canadian, British and Foreign born, classifi...	Aggregate data tables	<input checked="" type="checkbox"/>	1921	1921	DP20000016	Tableau 16: Population classifiée comme étant de naissance canadi...	Canada. Dominion Bureau of Statistics	Sex Place of birth
17	Table 17: Population by sex in cities and towns of 10,000 and ov...	Aggregate data tables	<input checked="" type="checkbox"/>	1921	1921 1911 190	DP20000018	Tableau 17: Population par sexe dans les cités et les villes de 10,00...	Canada. Dominion Bureau of Statistics	Sex
18	Table 18: Rural and urban population by provinces and territorie...	Aggregate data tables	<input checked="" type="checkbox"/>	1921	1921 1911 190	DP20000019	tableau 18: Population rurale et urbaine par provinces et territoires...	Canada. Dominion Bureau of Statistics	Demographic change Population
19	Table 19: Per cent distribution of rural and urban population by ...	Aggregate data tables	<input checked="" type="checkbox"/>	1921	1921 1911 190	DP20000020	Tableau 19: Distribution pour cent de la population rurale et urbain...	Canada. Dominion Bureau of Statistics	Demographic change Population
20	Table 20: Population, urban and rural classified by sex, provinces,...	Aggregate data tables	<input checked="" type="checkbox"/>	1921	1921	DP20000021	Tableau 20: Population urbaine et rurale, classifiée par sexe, pour le...	Canada. Dominion Bureau of Statistics	Sex Population
21	Table 21: Estimated population, by provinces and territories, as a...	Aggregate data tables	<input checked="" type="checkbox"/>	1921	1921 1911	DP20000022	Tableau 21: Population estimative, par provinces et territoires au 1e...	Canada. Dominion Bureau of Statistics	Demographic change Population
22	Table 22: Origins in 1921, 1911 and 1901 and proportion per cen...	Aggregate data tables	<input checked="" type="checkbox"/>	1921	1921 1911 190	DP20000023	Tableau 22: Origines en 1921, 1911 et 1901 et pourcentage de la p...	Canada. Dominion Bureau of Statistics	Demographic change Ethnic origin

Authority lists – geographic units

ENGLISH - Census Inventory

Data Automations Interfaces

Geographic units

Sorted by 1 field

Name	Authority te...	Year introduced	Year ended	Reference	Abbrev-E	Name-F	Ab...	Related names	Previously	Subsequently	Description
Agricultural ecumene	Y	1976				Écoumène agricole					Ecumene is a term used by
Area aggregate	Y	1971	1971		AA	Agrégat de secteurs	AS			Provincial census tra	Area aggregate was the in
Block	Y	?	2001			Îlot				Dissemination block	Area equivalent to a city b
British Dependent Territory	Y	1934	1949	Use only for Newfoundland bet...		Territoire britannique dépe...			Nation	Province	Newfoundland was a Britis
Census agglomeration	Y	1941			CA	Agglomération de recense...	AR	Fringe Core Rural area Po			A census metropolitan are
Census consolidated subdivision	Y	1966			CCS	Subdivision de recensem...	SRU	Census division Census subd			A census consolidated sub
Census district	Y	1825?	1911		CD	District de recensement	DR	District City County		Census division	Districts usually correspon
Census division	Y	1921			CD	Division de recensement	DR	Regional district County	Census district		Group of neighbouring m
Census metropolitan area	Y	1941			CMA	Région métropolitaine de r...	RMR	Fringe Core Rural area Po			A census metropolitan are
Census subdistrict	Y	1825?	1911		CSD	Sous-district de recensement	SDR	Town Township Subdistrict		Census subdivision	Subdistricts usually corres
Census subdivision	Y	1921			CSD	Subdivision de recensement	SDR	Indian Reserve Town City	Census subdistrict		Census subdivision (CSD)
Census tract	Y	1941			CT	Secteur de recensement	SR	Census agglomeration Censu			Census tracts (CTs) are sm
City	Y	1921?	1921?	Use only when this terminology ...		Cité		Census subdivision Census d			In earlier censuses this uni
Civil parish	N			Use census subdistrict or census...		Paroisse civile		Census division Census subd			
Colony	Y	1665	1867	Use for pre-confederation table...		Colonie				Territory Province	
Core	Y	2011		See also population centre		Noyau		Population centre Census ag	Urban core		The core is the population
County	Y		1921?	Use only when this terminology ...		Comté		Census division Census distri			Generally used as a census
County seat	Y					Chef-lieu		Township County		Census subdivision	A county seat is the town/
Designated place	Y	1996			DPL	Localité désignée	LD				Usually a small community
Dissemination area	Y	2001			DA	Aire de diffusion	AD		Enumeration area		A dissemination area (DA)
Dissemination block	Y	2006			DB	Îlot de diffusion	ID		Block		A dissemination block (DB)
District	Y		1945	Use only when found in pre-Co...		District		Census division Census distri			Generally used as a census
Add...	Y	1874		Use only when found in pre-Co...		Division					Found in 1874 Census of F

Authority lists - subjects

ENGLISH - Census Inventory						Data	Automations	Interfaces	Help	Contact sales	Share			
Census items						Subjects	Census years	Content type	Geographic coverage	Geographic units	Author/Producers	Publications list	+	Extens
Views	Grid view	Hide fields	Filter	Group	Sorted by 1 field	Color	Share view							
<input type="checkbox"/>	A Name	Authority term (Y...)	Reference	A Name-F	Notes									
51	Deaths	N	Use Mortality	Décès										
52	Demographic change	Y		Changement de population										
53	Diploma / Certificate / Degree	N	Use Education	Diplôme / Certificat / ou Grade										
54	Disability	N	Use Health and disabilities	Incapacité										
55	Disability benefits	N	Use Health and disabilities and/or Income	Prestations d'invalidité										
56	Distance from work	N	Use Commuting	Distance domicile-travail										
<input type="checkbox"/>	Domestic servants	Y		Domestiques										
58	Dwelling condition	N	Use Dwellings	État du logement										
59	Dwellings	Y		Demeure	Use for description o..									
60	Dwellings, inhabited	N	Use Dwellings	Logements occupés										
61	Dwellings, uninhabited	N	Use Dwellings	Logements non-occupés										
62	Earnings	N	Use Income	Sources de revenus										
63	Economic families	Y	See also Families; Census families	Familles économiques										
64	Economic family status	N	Use Economic families	Situation dans la famille économique										
65	Education	Y		Scolarité										
66	Employment	N	Use Labour	Emploi										
67	Employment income	N	Use Income	Revenu d'emploi										
68	Employment Insurance benefits	N	Use Income	Prestations d'Assurance-emploi										
69	English (language)	N	Use Language	Anglais (langue)										
70	Eskimos	N	Use Inuit & Indigenous peoples	Esquimaux										
71	Ethnic origin	Y	See also Place of birth; Indigenous Peoples; and Visible Minority.	Origine ethnique	The word ethnic refe..									
72	Families	Y	See also Family characteristics; Family size	Familles	Indicates a family rel..									

Problem:
Discriminatory
terminology used
in historical
censuses

Stakeholder & user consultations

- Consultations & related activities completed:
 - Consulted with library community at Data Liberation Initiative conference (2021)
 - Disseminating Census Data: Learning from Experience workshop (2022)
 - Review and assessment of existing Canadian census data platforms
 - Survey of stakeholder organizations (owners of 8 key existing census data platforms) (2022-23)
 - Survey of end users census data needs (2023)
- Activities currently underway
 - Further discussions with stakeholder organizations
 - Analysis of data from surveys
 - Inclusive Census Discovery – consultation on mitigating harmful impacts of census content within the discovery platform

The census platform

The power of the inventory once online and searchable...

“I want to find what data was collected in the 19th century about Canada’s Indigenous peoples”

- Many censuses were taken within this time frame – including regional censuses in the pre-Confederation period
- Censuses may or may not have included indigenous peoples, very time consuming to check them all
- Terminology to describe indigenous peoples varied over time

The census platform aims to facilitate this kind of searching

Proof of concept development

Census Discovery Portal

Language

Subject

Census Year(s) covered by item

1817	1818	1811	1827	1828	1829	1830
1831	1832	1833	1835	1838	1840	
1843	1848	1851	1861	1870	1871	
1855	1884-5	1885-6				

Geographic units

Geographic coverage

Format

Show entries

Search:

	Title	Link	Census year (of publication)	Census Year(s) covered by item	Subject	Geographic coverage	Geographic units	Format
257	Appendix No. 5: Upper-Canada. Census by Ages, Married, Single, Widowers and Widows, Deaths, &c.	LINK	1851	1851	Sex, Marital status, Families, Fertility, Mortality, Age - groups, Education, Health and disabilities, Visible minority, Indigenous peoples	Upper Canada, Canada West	City, County, Township, Town, Village	Print, PDF, JP2, Website
258	Appendix No. 6: Lower-Canada. Census by Ages, Married, Single, Widowers and Widows, Deaths, &c.	LINK	1851	1851	Sex, Marital status, Families, Fertility, Mortality, Age - groups, Education, Health and disabilities, Visible minority, Indigenous peoples	Lower Canada, Canada East	City, County, Township, Town, Village	Print, PDF, JP2, Website
272	Appendix 94: Statistics of each county of the Province of Nova-Scotia. Census of the province, exhibiting the aggregate numbers, ages, and sexes, of each description of persons	LINK	1851	1851	Sex, Marital status, Low income, Health and disabilities, Age - groups, Visible minority, Ethnic origin, Indigenous peoples	Nova Scotia (pre-Confederation)	County	PDF, Print
297	Table I : Dwellings, families, Population, Sexes, Races	LINK	1870-71	1851	Dwellings, Families, Population, Sex, Visible minority, Not a visible minority, Indigenous peoples	New Brunswick (pre-Confederation)	County	PDF, Print, IVT, CSV, JP2, Website
303	Table IV : Deaf and Dumb, Blind, Unsound Mind, Races and Schools.	LINK	1870-71	1851	Health and disabilities, Visible minority, Education, Public institutions, Indigenous peoples	Nova Scotia (pre-Confederation)	County	PDF, Print, IVT, CSV, JP2, Website
309	Table C-I : Census of 1851. Origins of the People	LINK	1870-71	1851	Ethnic origin, Indigenous peoples	Canada East, Canada West, Upper Canada, Lower Canada	Province	PDF, Print, JP2, Website
598	Table III. Origins of the People	LINK	1885-6	1885-6	Indigenous peoples, Ethnic origin	Manitoba	Subdistrict, District	PDF, Print
618	Table III. Origins of the People	LINK	1884-5	1884-5	Indigenous peoples, Ethnic origin	Northwest Territories, Assiniboia (Second District), Saskatchewan (pre-Confederation), Alberta (pre-Confederation)	Subdistrict, District	PDF, Print
746	First Electoral District of Prince County	LINK	1848	1848	Population, Indigenous peoples, First Nations, Health and disabilities, Place of birth, Lands, Religion, Age - groups, Sex	Prince Edward Island (pre-Confederation)	Electoral district, Township	PDF, Print
747	Second Electoral District of Prince County	LINK	1848	1848	Population, Indigenous peoples, First Nations, Health and disabilities, Place of birth, Lands, Religion, Age - groups, Sex	Prince Edward Island (pre-Confederation)	Electoral district, Township	PDF, Print

Next steps

- Phase 2 project wrap up by March 31, 2024
 - Complete project deliverables
 - Final report – vision for future phase
- Start on Phase 3

Questions?

We're always looking for more collaborators. Get in touch anytime:

Leanne Trimble: leanne.trimble@utoronto.ca

<https://cddp-pddr.ca/en/>

census@scholarsportal.info