



CoreTrustSeal (CTS) at Scholars Portal and Queen's University

Alicia Cappello, Research Data Management Librarian (Queen's University)
Meghan Goodchild, Research Data Management Systems Librarian (Queen's University / Scholars Portal)

Scholars Portal Day 2022

About Us



Alicia

- Dataverse Preservation & Policy Coordinator at Scholars Portal (January - October 2021)
 - Led the Scholars Portal Dataverse CTS Certification Project
- Currently, Research Data Management Librarian at Queen's University

Meghan

- Research Data Management Systems Librarian at Queen's University / Scholars Portal
 - Facilitating the continuing activities of the Dataverse CTS Certification Project



Context

- Open-science movement
 - Research data are valuable assets that have the potential to be reused and combined in innovative ways
- Tri-Agency RDM Policy (2021)
 - Data Deposit pillar
- Canadian researchers are increasingly looking for digital repositories to deposit and share their data that are secure, trustworthy, sustainable



Plan



Create



Process



Analyze



Disseminate



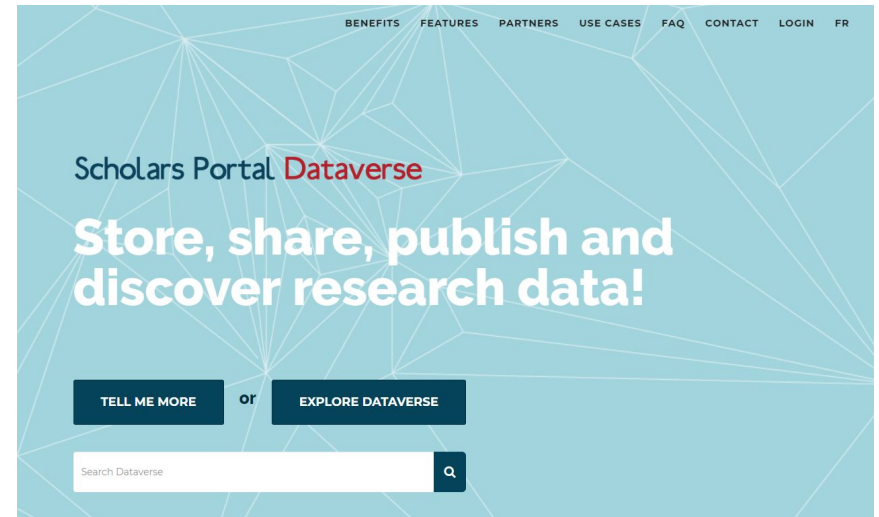
Preserve



Reuse

National Dataverse Repository

- Bilingual, multi-disciplinary repository based on open-source Dataverse software
- Available to researchers affiliated with 60 participating Canadian post-secondary institutions
- Governed by the four academic library consortia: COPPUL, OCUL, BCI, and CAAL
- Over 900 collections, 8,000 datasets, 178,000 files, and 10 million downloads.
- In process of renaming to better reflect national service





CoreTrustSeal (CTS) Certification

- CTS is an international, community-based, non-governmental, non-profit organization.
- Core-level data repository certification based on 16 DSA-WDS Core Trustworthy Data Repositories Requirements.
- CTS certification is the first step in a global framework for repository certification, including Nestor Seal DIN 31644 and ISO 16363.
- Currently one application for all parts of a data repository, including collection management AND digital infrastructure.
- Website: <https://www.coretrustseal.org/>

Dataverse CTS Project Cohort

- Includes 12 institutional collections



Gap Analysis

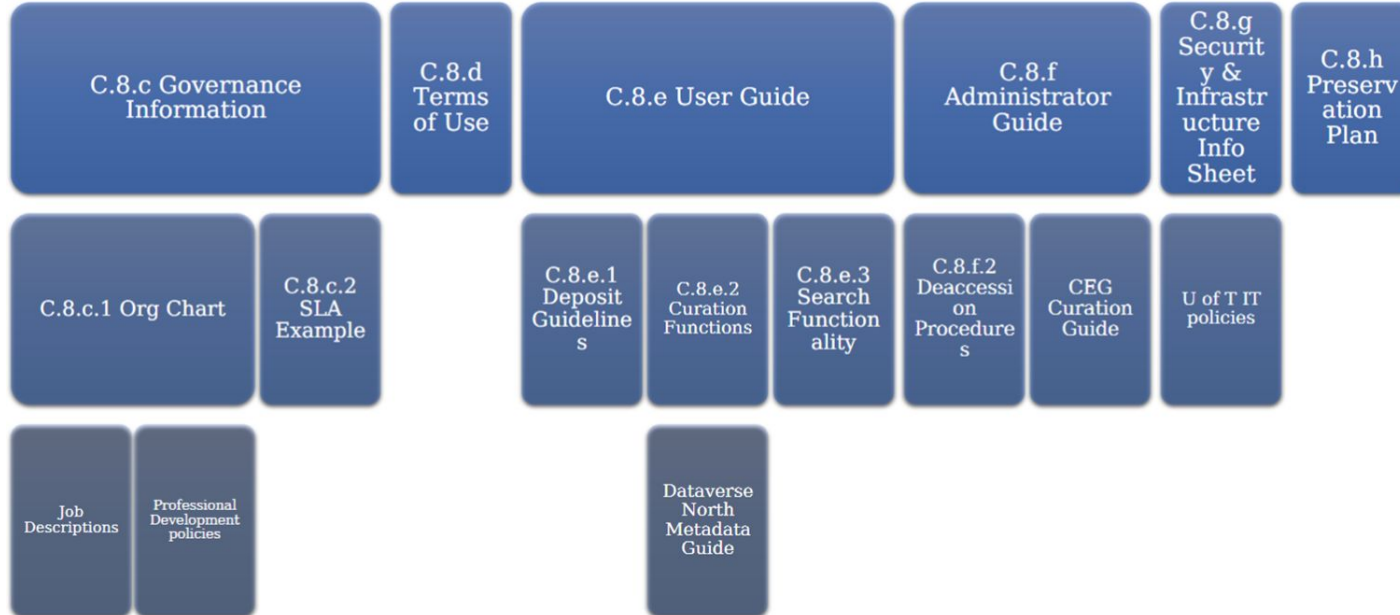
- Step 1: Scholars Portal vs. Institution
- Step 2: For SP: what we have vs. what we need
- Step 3: For Institutions: summary of needed items

Requirements List:

#	Requirement Name	Requirement Description	Types of Documents used in Successful Applications	Documents Needed from Scholars Portal	Documents Needed from Member Institution
Digital Object Management					
R7.	Data Integrity and Authenticity	The repository guarantees the integrity and authenticity of the data.	<ul style="list-style-type: none"> • Fixity checks/checksums • Changelogs / audit trails • Dataset version control • Metadata standards/conventions • Verifying depositor (user) identity 	<p>DOCUMENTS:</p> <ul style="list-style-type: none"> • SP DP Admin Guide (curation functions such as fixity checks, checksums, version control, metadata defaults, access control, etc.) ONGOING • Dataverse North Metadata Guidelines EXISTS 	<ul style="list-style-type: none"> • If access is not via Shibboleth, information on how depositor access is controlled/processed for institutional users. • Information pertaining to any procedures or policies in addition to the SP DV minimums or defaults. <p><i>Policies or procedures related to institutional metadata minimums, audit trails, version control, and depositor identity.</i></p> <p>DANS Provenance Document.pdf</p> <p>DataverseNO Deposit Agreement.pdf</p> <p>DataverseNO Deposit your data.pdf</p> <p>DataverseNO Curator Guide.pdf</p> <p>Odum Data Curation Workflow.pdf</p>

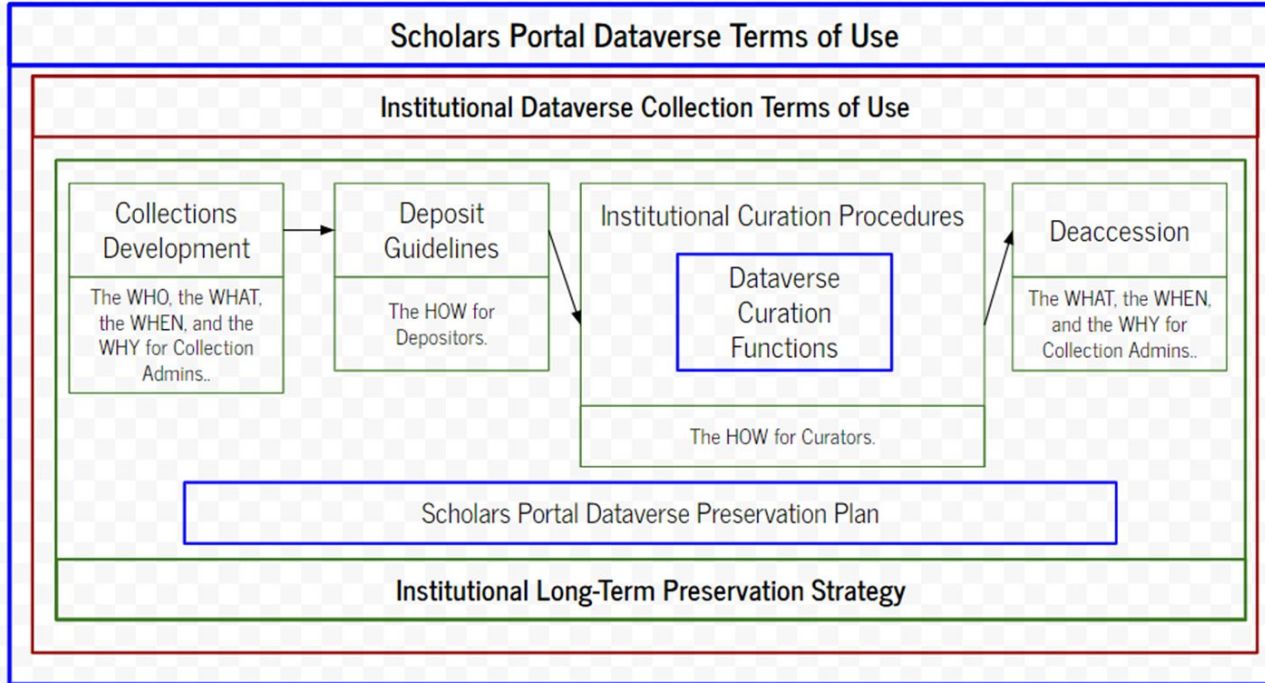
Needed by Scholars Portal

C.8.b About Scholars Portal Dataverse



Needed by Institutions

Institutional Dataverse Collection Administration



Application Template



- **RED** text = Scholars Portal's response
- **GREEN** text = Guidance for institutional response
- Planned completion
June/July 2022

R0.g Other Relevant Information:

Can include usage and impact of repository, reference to re3data.org, number of staff, size of collection, number of downloads, repository evolution, funding model, etc.

The repository record for Scholars Portal Dataverse (SP DV) can be found on the re3data.org website at <https://www.re3data.org/repository/r3d100010691>.

Metrics associated with SP DV can be accessed online [<https://dataverse.scholarsportal.info/metrics/?selection=>] and displayed by different time periods and institutional Dataverse collections.

General information about Scholars Portal can be found at DV can be found at <https://scholarsportal.info/>, and general information about SP DV can be found at <https://dataverse.scholarsportal.info/>. Training information and user guides can be found at <https://learn.scholarsportal.info/all-guides/dataverse/> [new link will be needed].

Members of Scholars Portal and participating institutions are also members of the Alliance expert and working groups [<https://portagenetwork.ca/network-of-experts/> - may need new link before submission], which work to enhance the support for research data management services across Canada.

[Include any additional information about your institutional Dataverse collection that might be helpful to the assessors. This might include your institutional re3data.org record, websites at your institution related to SP DV, additional metrics information, details of the specific expert and working groups your institution is a member of, etc.]

CTS Project Documents



SP-related documentation

- Terms of Use
- Technology Infrastructure and Security Information
- Preservation Plan
- Privacy Statement
- User Guide
- Admin Guide
- Application Template

Bilingual documents available June/July 2022

Institutional Dataverse Collection Policy Templates

- Collections Policy Template
- Deposit Guidelines Template
- Creating a Curation Framework for your Dataverse Repository
- Deaccession Policy Template
- Glossary of Terms
- 'Big Picture' Diagram

Available in English (French pending):

<https://spotdocs.scholarsportal.info/display/DA/T/Institutional+Dataverse+Collection+Policy+Templates>

Case Study - Queen's University Dataverse Collection

- Actively managing Queen's collection since 2013
- Data Curation Services
 - Mediated Deposit
 - Submit for Review
- RDM Team: Alicia Cappello, Meghan Goodchild, and Alex Cooper



[Queen's University Dataverse](#) (Queen's University)

[Contact](#) [Share](#)

The Queen's University Dataverse is a research data repository for our faculty, students, and staff. Files are held in a secure environment on Canadian servers. Researchers can choose to make content available publicly, to specific individuals, or to keep it locked.

Before starting, please review our [Dataverse Data Deposit Guidelines](#).

For more information on best practices for research data management, consult our [Research Data Management guide](#).

Need assistance? [Contact us](#).



75
YEARS
QUEEN'S UNIVERSITY
BIOLOGICAL STATION
Queen's University
Biological Station Data
Archive Dataverse



Environmental Fluid
Dynamics Laboratory

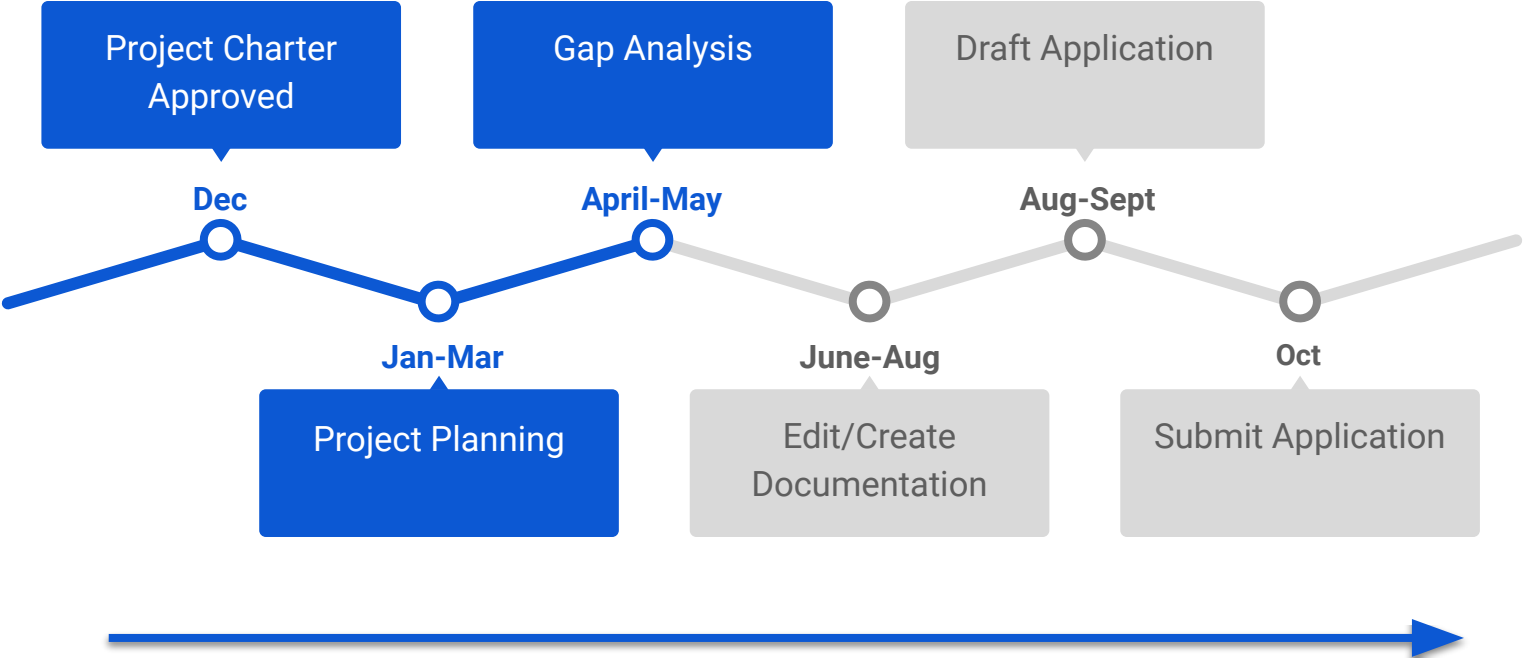
think Research
think Queen's
Undergraduate Student
Summer Research
Fellowship Data



Hydrodynamic Model
Results for Hurricane
Impacts in Coastal North



Case Study - Queen's Timeline



Support from CTS Canada Cohort

Case Study - Queen's



Challenges and other considerations:

- Understanding the divide between roles/responsibilities of infrastructure provider vs. institution
- Working against the timeline for current guidelines (2020-2022)
- Finding resources to effectively review/update/create documentation
- Finding capacity to develop new policies/procedures

Questions?



Please feel free to contact us if you have any other questions:

alicia.cappello@queensu.ca & meghan.goodchild@queensu.ca